

INDUSTRIAL LOCKS

With Assa Industrial locks you get a wide range/assortment that covers all requirements of locking. From the simplest cabinet to the most advanced solutions with high security. Our products are produced with many years of experience and together with you we can develop locks after the need of your company, concerning design and security.

The concept of Industrial locks holds many opportunities. It's not only about locks for cabinets but also to for example safe-deposit boxes, vending machines, letterboxes etc.

Assa Industrial locks are produced and marketed by Assa Industri AB in Eskilstuna and Lycksele. On the following pages a selection of our products are presented. For more information contact:

Eskilstuna

Assa Industri AB
P:O: Box 371
SE-631 05 Eskilstuna
Sweden

Telephone: +46 (0)16 17 70 00

Lycksele

Assa Industri AB
P.O Box 540
SE-921 28 Lycksele
Sweden



Security Levels

Security levels on our Industrial locks can be explained with different colors – green, yellow and red.

Green

Limited security eg. Assa 3-pin cylinder

Yellow

Normal security eg. Assa 5-pin cylinder

Red

High security with patented key control eg. Assa Desmo





Coin Lock

Application

Assa Coin locks is a perfect solution for temporary storage of for example clothes and valuables on sportscentres, baths, theatres, hospitals, etc.

Features

Assa Coin Lock is a mechanical lock for cupboards. The locks are available for use with the majority of coins and tokens. The lock can be provided with a coin return tray or a coin collecting box.

The Coin Lock can be ordered for right-or lefthanded lockers. A range of cylinders are available, covering different demands of material thickness and security levels. The cylinder can be master keyed. The lock can be made for use in different environments:

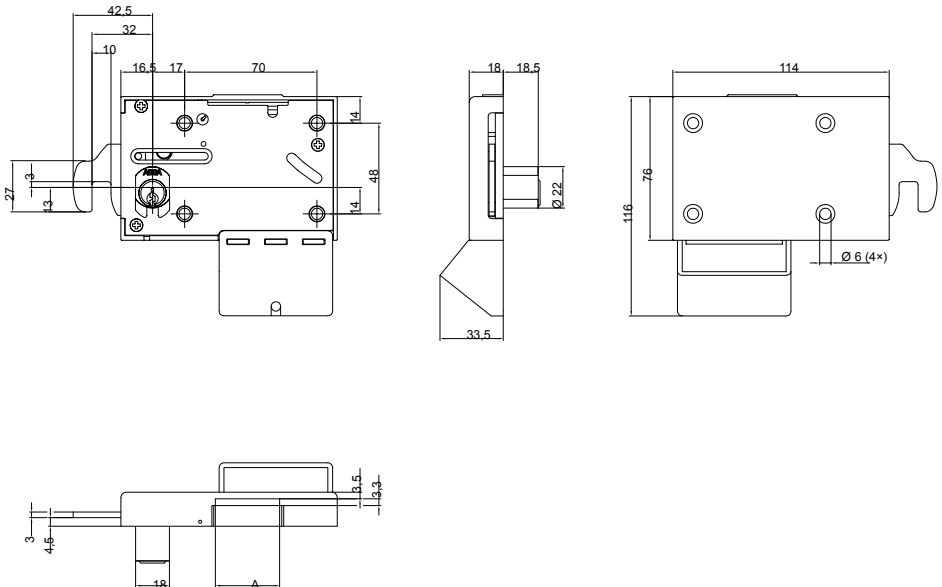
Dry Areas: Lock case of polycarbonate, cylinder of chromated brass, keys of nickelplated brass, hookbolt and the remaining unspecified components of yellow cromated steel.

Wet Areas(corrosive environments): Lock case of polycarbonate, cylinder of chromated brass, keys, hook bolt and the remaining unspecified components of nickel plated brass.

Function

When the correct coin is inserted the door can be locked and the key can be removed.

When the lock is opened with the key the coin passes through into 1)the return tray and the user removes the coin – or 2)into the coin collecting box if a charge is being made for use of the locker. Assa Coin Lock is designed so that the key always remains captive in the lock after use, available for a new visitor.





Cassette Lock

Application

Assa Coin locks is a perfect solution for temporary storage of for example clothes and valuables on sportscentres, baths, theatres, hospitals, etc.

Features

Assa Cassette Lock is a mechanical card lock for cupboards. Hole punched cards or tickets will give access to lock with keys. The lock is of universal type, both cards and tickets (one hole punched) can be used in same lock. On request, when assembling the locks, 10 different located card codes are available.

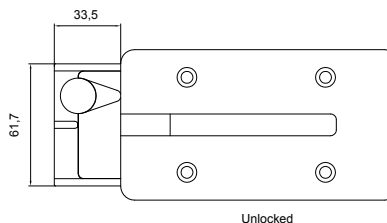
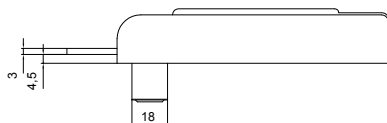
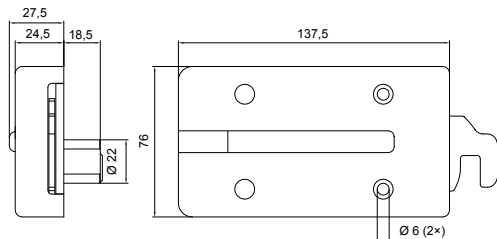
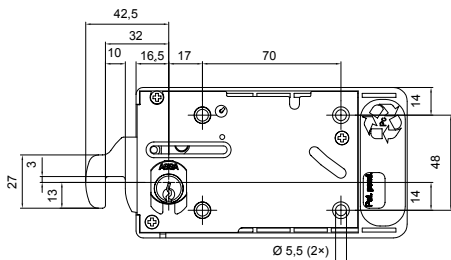
The cassette lock can be ordered for right- or lefthanded lockers. A range of cylinders covering different demands of material thickness and security levels, can be used. The cylinder is master keyed.

The lock is made for use in wet areas: Lock case of polycarbonate, cylinder of chromated brass, keys and hook bolt of nickel plated brass.

Function

When inserting the card or the ticket in the cassette, the door can be locked and the key removed. In locked position the card or ticket remains captive in the lock cassette. The insertion of a card or a ticket is then the deposit, which enables the key to be taken away by the customer. After use, when the door is unlocked the key remains captive in the lock, available for next customer.

Using different card codes, enable to keep customers apart in different spaces. (For instance, in order to keep men in mens room and women in ladys room).





Locker Hasp

Application

Locker hasp for cabins, drawers, vending machines, etc.

Features

Locker hasp for material thickness up to 22 mm. Housing and core of zinc plated steel, locking device for extra safety of composite. Large selection of 3 mm thick catches.

Function

In locked position the padlock stops the catch from turning. When the padlock is removed the catch can be turned 90° and the locker can be opened. Right hand turning as standard and left hand is available on request.

Ref. no.	Mtrl. thickness (up to):	Material
390 785	16 mm	Steel
390 684	16 mm	Steel
391 350	16 mm	Zinc
492 831	22 mm	Steel



49 28 31



39 13 50



39 07 85

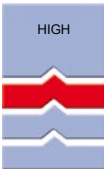


39 06 84



Cam Lock Cylinders

Cam Lock 8950 Desmo



Application

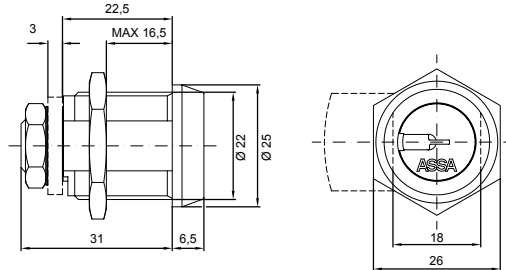
Lock for cabins, drawers, vending machines, etc.

Features

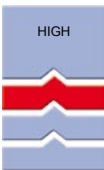
Assa Desmo is a patented lock construction for top security. 8-pin cylinder lock for material thickness up to 16 mm. The construction is based on direct driven pins without springs. Master keying and very high number of differs. Cylinders of nickel plated brass and keys of nickel silver. Drill protection is available on request.

Function

The key turns 90° and can only be removed when the catch is in the locked position. Right hand turning as standard and left hand is available on request.



Cam Lock 8920 Desmo



Application

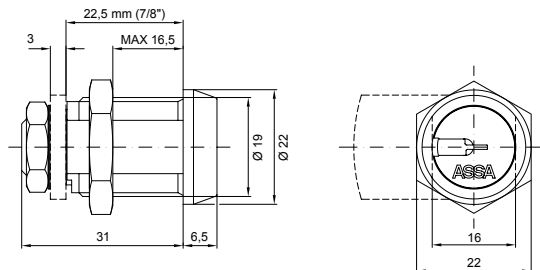
Lock for cabins, drawers, vending machines, etc.

Features

Assa Desmo is a patented lock construction for top security. 8-pin cylinder lock for material thickness up to 16 mm. The construction is based on direct driven pins without springs. Master keying and very high number of differs. Cylinders of nickel plated brass and keys of nickel silver. Large selection of 3 mm catches.

Function

The key turns 90° and can only be removed when the catch is in the locked position. Right hand turning as standard and left hand is available on request.





Cam Lock Cylinders

Cam Lock 8460

Application

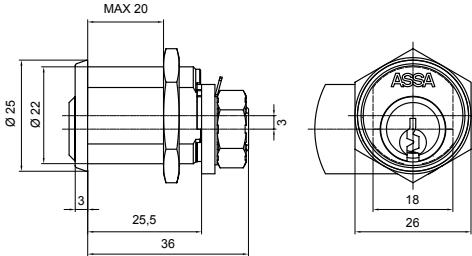
Lock for cabins, drawers, vending machines, etc.

Features

6-pin camlock for material thickness up to 20 mm. Cylinders and keys of nickel plated brass. Large selection of 3 mm thick catches. Can be master keyed.

Function

The key turns 90° and can only be removed in locked position. Right hand turning as standard and left hand is available on request.



Cam Lock 10460

Application

Lock for cabins, drawers, vending machines, etc.

Features

6-pin heavy duty cylinder lock for material thickness up to 22 mm. Cylinders and keys of nickel plated brass. Large selection of 3 mm thick catches. Can be master keyed.

Function

The key turns 90° and can only be removed in when the catch is in the locked position. Right hand turning as standard and left hand is available on request.

